

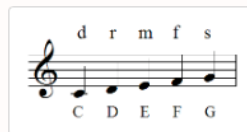


Choral Placement

Please complete the following on a video for the Choral Arts Department ~

1. Sing My Country Tis of Thee in any key a cappella.
2. Sing a MAJOR scale ascending and descending in any key
3. Sing the excerpt below on solfege of a syllable of your choice (such a la).

Mark's Melody



[Hear](#) [Metronome](#) [1st Note](#) [Note Set](#) [Sofa](#) [Note Names](#)

A musical notation exercise in 4/4 time, written on a treble clef staff. The key signature has one sharp (F#), indicating a major scale. The melody starts with a whole note 'S' (solfege syllable) on the first line (F#4). The notes are: F#4 (quarter), G4 (quarter), A4 (quarter), B4 (quarter), C5 (quarter), D5 (quarter), E5 (quarter), F#5 (quarter), G5 (quarter), F#5 (quarter), E5 (quarter), D5 (quarter), C5 (quarter), B4 (quarter), A4 (quarter), G4 (quarter), F#4 (quarter). The piece ends with a double bar line. A '5' is written above the first note of the second line.

[Back to Unit 10](#)

[Mark as Complete](#)