

ASA COVID-19 POLICIES FOR STUDENTS

A GUIDE FOR HOW WE STAY SAFE TOGETHER ON CAMPUS

This short guide describes all of the ways that students at ASA will work together to keep each other and all community members safe during the time of the Covid-19 pandemic. Please review carefully and often as you prepare to learn in the new environment that the Covid-19 pandemic has created.

For questions related to this guide and its policies, please contact ASA's Operations Director at maxwell@goasa.org



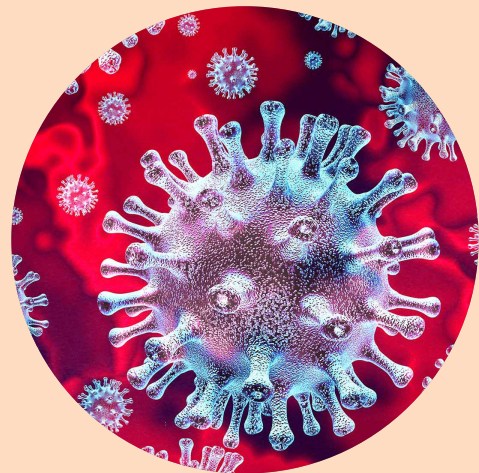
WWW.GOASA.ORG

CONTENTS

MASK POLICY	4
SOCIAL DISTANCING	6
SYMPTOM MONITORING	8
HAND SANITIZING	10
ILLNESS ON CAMPUS	12
ASA RE-ENTRY PROCEDURES	14

COVID-19

Covid-19 is an acute respiratory virus that has spread across the world beginning in December of 2019. Characterized by coughing and shortness of breath, Covid-19 is a serious threat to public health and our school community.



NOTES

.....

.....

.....

.....

.....

.....

.....

.....

.....

.....

.....

.....

.....

.....

.....

.....

.....

.....

.....

.....

.....



MASK POLICY

Students will wear a mask at all times while on campus unless they are eating or drinking.



IMPORTANT DETAILS

- Students will be expected to wear a mask while on campus at all times except when eating or drinking.
- Students are welcome to bring their own mask. Masks must be snug against the face and cover both mouth and nose at all times.
- When we return to campus, ASA will provide one mask per student for use on campus.
- Masks with a valve or opening for increased air flow will not be allowed to ensure the safety of all community members.
- If a student arrives on campus without a mask, one will be provided for them by ASA. If students consistently forget to bring their mask to school, administration will work on an equitable and clear solution to maintain the student's safety and the safety of those around them.
- Students may request an accommodation regarding this policy for reasons based on religion, disability, or other grounds protected by federal, state, or local laws. To request an accommodation, please reach out to ASA's Operations Director.

IMPORTANT DETAILS

- Outdoors - Students will be expected to keep a 6-foot distance between themselves and others while outside. With this in mind, transitions will be extended to provide more time for students to move from class to class while distancing.
- Indoors - ASA will limit class sizes using public health guidelines in order to achieve as much social distancing as possible while in classrooms. In consultation with ASA's Operations Director, each teacher will work to create optimal social distancing guidelines for their classrooms.
- ASA will place floor stickers in high-use areas so that students can tell what the appropriate distance is between students in order to achieve safe conditions.





SOCIAL DISTANCING

When it is possible,
students will stay 6 feet
apart while on campus



SYMPTOM MONITORING

Each day students will have
their symptoms checked
before school.

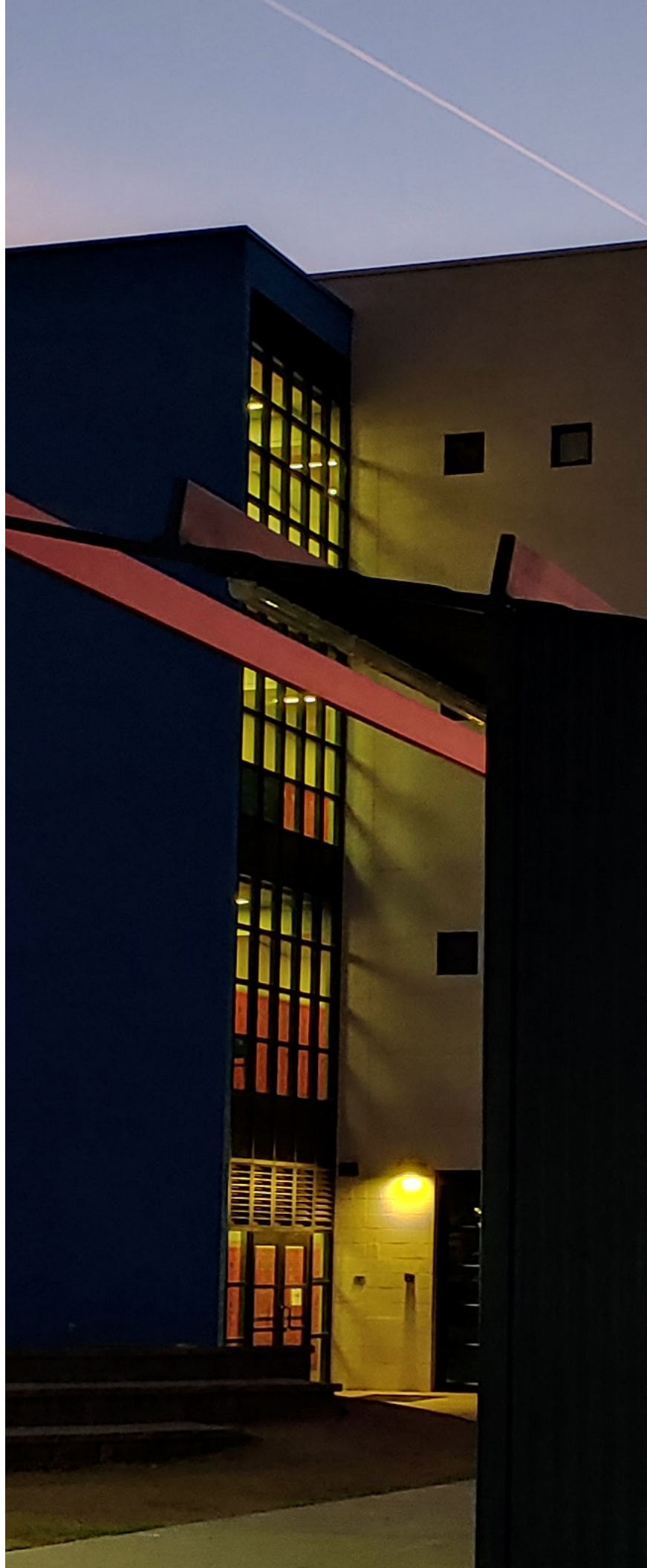


IMPORTANT DETAILS

- ASA will require that students' symptoms are monitored prior to coming to campus each school day through a Canvas course on their Canvas Dashboard to ensure the safety of every community member on campus.
- ASA will provide symptom-monitoring policies for families that will be followed each day and verified by ASA staff.
- If a student demonstrates a symptom of Covid-19 during the day, they will be sent to ASA's health center and their parent(s) / guardian(s) will be contacted for immediate (within 30 minutes) pickup.
- Symptoms of Covid-19 include the following:
 - Fever or chills (100.4° or higher)
 - Cough
 - Shortness of breath or difficulty breathing
 - Fatigue
 - Muscle or body aches
 - Headache
 - New loss of taste or smell
 - Sore throat
 - Congestion or runny nose
 - Nausea or vomiting
 - Diarrhea

IMPORTANT DETAILS

- Upon entering or exiting any classroom, each student is required to sanitize their hands using the hand-sanitizing pumps that are installed at the doorway of each classroom.
- Outdoor sinks will be available outside of the Main Building and the South Building to facilitate regular handwashing during times spent outside. If an activity or class is held outside, students are required to wash their hands at the beginning and end of each activity or class outside.





HAND SANITIZING

Students will regularly
sanitize their hands
throughout the day.



ILLNESS ON CAMPUS

What does a student do if
they feel ill on campus?



IMPORTANT DETAILS

- If a student feels sick on campus it is imperative that they notify the nearest adult of their illness.
- In order for students to feel that both their physical health and their privacy are ensured, all ASA staff have been trained in how to respond appropriately to a student displaying or disclosing symptoms of Covid-19.
- Symptoms of Covid-19 include the following:
 - Fever or chills (100.4° or higher)
 - Cough
 - Shortness of breath or difficulty breathing
 - Fatigue
 - Muscle or body aches
 - Headache
 - New loss of taste or smell
 - Sore throat
 - Congestion or runny nose
 - Nausea or vomiting
 - Diarrhea

Re-Entry Mitigation Strategies

When a student or staff member has been required to stay home from school: (a) following a positive test for COVID-19; (b) after showing symptoms of COVID-19; (c) after recent close contact with a person with COVID-19; or (d) after out of state travel; the School will implement the following mitigation strategies related to re-entry on the School campus. Such individuals will be permitted to return to School for on-site support services or in-person instruction, upon compliance with CDC and local health official guidelines, which currently provide:

1. Following an Illness Suspected or Confirmed to be COVID-19 or Out of State Travel: After ...
 - At least 10 days* since symptoms first appeared or return from travel, return would occur on day 11; and
 - At least 24 hours with no fever without use of fever-reducing medication; and
 - Symptoms (such as cough or shortness of breath) have improved.
*20 days if severely ill or immunocompromised.
2. Following a Negative Test but with Symptoms, or if Travelling a Negative Test:
 - No sooner than day 5 after exposure and return on day 8 with a negative test result
 - Symptoms (such as cough or shortness of breath) have improved.

Compliance with Applicable Guidance

If any part of this Plan conflicts with applicable local, county, state law, regulation, or public health guidance, the School will comply with the applicable law, regulation, or public health guidance.



RE-ENTRY PROCEDURES AFTER ILLNESS OR OUT OF STATE TRAVEL

If a student has been exposed, has symptoms of, tests positive for Covid-19, or travels out of state, this is how they return to campus.